

MANIFOLD – ASTM F1960 PEX

▶▶ 672 SERIES

BranchMaster™

SPECIFICATION

Sioux Chief 672 Series BranchMaster™ PEX manifolds shall be used in plumbing or heating systems for safe distribution of hot or cold water to supply fixtures. Designed in accordance with ASTM F1960

MATERIALS

Trunk: Type L copper tube

Trunk Connections: Copper, C69300 Brass¹, CPVC²

Branch Connections: C69300 Brass¹

CERTIFICATIONS

NSF-372 compliant, IAPMO listed

Note: Connection specifications are limited to those called out in their respective ASTM standards for pipe and fittings.

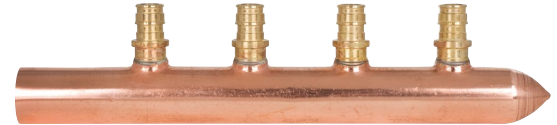
INSTALLATION NOTES

Full installation instructions can be found at www.siouxchief.com. Hot water manifolds should be located within the first six feet after a water heater to aid in hot water delivery times. Do Not recirculate back through any manifold branch. Do not expose manifolds to heat in excess of 180°F. Do not install damaged manifolds. Do not alter manifolds. Do not solder or braze in close proximity to manifold unless it is protected with a heat-blocker to protect/keep the manifold under 180°F. Keep manifolds free from hazardous chemicals or chemical vapors.

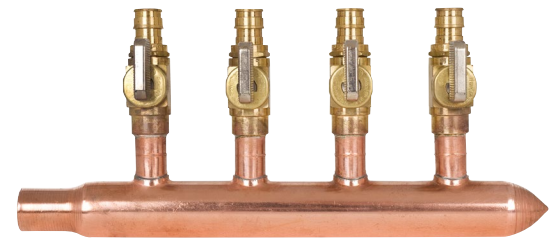
1: Material is DZR and SCC resistant, compliant with NSF-61 & 372, and compliant with California No Lead Plumbing Law

2: FGG/BM/CZ system compatible

ITEM # SUBMITTED	_____
JOB NAME	_____
LOCATION	_____
ENGINEER	_____
CONTRACTOR	_____
PO#	_____ TAG _____



672WG0440



672WW0430



Create Item Number

672 ABC

e.g. **672WG03C0**: 1" Type L copper trunk, three 1/2" F1960 PEX branches, 1" CPVC inlet x spun closed

BRANCH TYPE A

WG = 1/2" F1960 PEX - Brass

WV = 1/2" F1960 PEX - Brass ball valve

BRANCH QTY B

02 = 2 branches

03 = 3 branches

04 = 4 branches

06 = 6 branches

08 = 8 branches

10 = 10 branches

12 = 12 branches

TRUNK TYPE C

30 = 1" Type-L copper, 3/4" male sweat x spun closed

40 = 1" Type-L copper, 1" male sweat x spun closed

44 = 1" Type-L copper, 1" male sweat x 1" male sweat

90 = 1" Type-L copper, 3/4" F1960 PEX x spun closed

99 = 1" Type-L copper, 3/4" F1960 PEX x 3/4" F1960 PEX

C0 = 1" Type-L copper, 1" CPVC x spun closed

Note:

Not all option combinations are STOCK manifolds.

For non-stock manifolds, a minimum of 25 pcs is

required and extended lead times may apply.